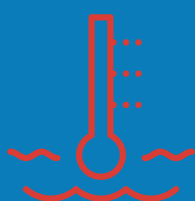




# HEAT STRESS IN BEEF CATTLE

Heat stress can occur in the early summer months or during heat waves in the summer or fall when both temperature and humidity are high.

## WHAT IS HEAT STRESS?



Heat stress occurs when the heat an animal is exposed to is greater than their body's ability to regulate. High temperatures and humidity play a large role in increasing body temperature. Heat stress also occurs in boarded trailers that are not moving, even at low temperatures. Heat stress can cause cattle to eat less, lose weight, produce less milk, and can negatively affect reproductive performance. Severe heat stress may result in illness and death.

## WHAT ARE THE SIGNS?



Open-mouthed panting with the tongue protruding

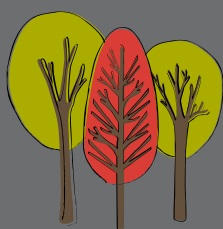


Laboured breathing



Drooling or froth around the mouth

## WHAT CAN I DO?



Provide shade



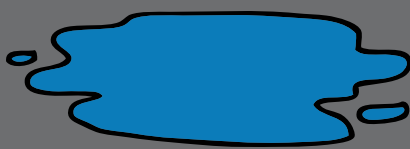
Provide lots of water



Avoid handling



Feed at dusk / dawn



Wet ground in part of the pen



Sprinkle the cattle

## LEARN MORE!



**NATIONAL FARM ANIMAL CARE COUNCIL**  
**CONSEIL NATIONAL POUR LES SOINS AUX ANIMAUX D'ÉLEVAGE**

The Code of Practice for the Care and Handling of Beef Cattle  
1.1 Protection from Extreme Weather - Page 7



[WWW.AFAC.AB.CA](http://WWW.AFAC.AB.CA)